

Full HD Resolution
1080P HD-CCTV
30 LED
IR Dome Camera

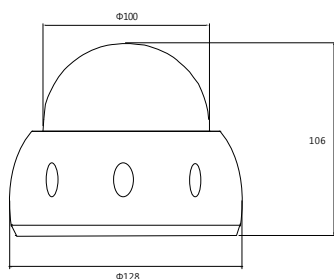
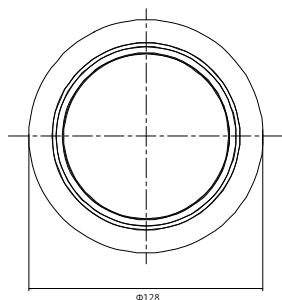


YOUR BEST PARTNER - Vi CUBE
WE REVOLUTIONIZED THE WAY THE WORLD SECURES.

HD·CUBE

Features

- 1/3" Panasonic Progressive Scan CMOS Sensor
- 1080p(1920x1080)@30/25fps, 720p@60/50fps
- Dual Output - Megapixel HD(BNC) & SD(BNC) Output
- Defog Function (Visibility Enhancement)
- 3D Digital Noise Reduction
- WDR and BLC Function
- 4mm Fixed Board Lens
- Intelligent Motion Detection / Privacy Zone Mask
- Dual Power (AC24V / DC12V) Optional



Specifications

MODEL	VHD-300PR
Image Device	Panasonic 1/3" 2M CMOS
Total Pixels	2010(H) x 1108(V) approx. 2.2M pixels
Effective Pixels	1944(H) x 1092(V) approx. 2.1M pixels
Scanning System	Progressive
Resolution	1080p@30/25fps, 720p@60/50fps Max. 1,100TVL
S/N Ratio	More than 52dB (AGC OFF)
Min. Illumination	0.001 Lux @ (DSS ON, BW), 0.0 Lux @ IR LED ON
Video Output	HD-SDI, Digital : BT. 1120 1.0 Vp-p NTSC/PAL Composite Signal(without WDR)
Sync. System	Internal
Electronic Shutter	NTSC : 1/30~1/60,000sec, PAL : 1/25~1/60,000sec
Lens Type	4mm Lens
OSD	Built-in
Focus Adjust	Off/On
Lens	ELC/ALC
AGC	0 - 20 steps
Shutter Speed	MANUAL/AUTO
Sens-up	Off/x2~x8
Brightness	0 - 20 steps
WDR/BLC	Off/HLC/BLC/WDR
ACE	Off/On
Day&Night	Auto/Color/B&W/EXTERN
White Balance	Auto/Autoext/Preset/Manual
3D-DNR	Off/Low/Middle/High
Mirror	Off/On
Flip	Off/On
Sharpness	0 - 10 steps
Shading	Off/On
Digital Zoom	X1 -X8
Motion Detection	Off/On
Privacy Mask	OFF, ON (16 AREAS)
Language	English/Chinese/Korean/Japanese/Russian/French/German
IR LED(Wavelength)	30 IR LED (850nm)
Operating Temp./Storage Temp.	-10°C~+50°C(14°F~122°F) / -20°C~+60°C(-4°F~140°F)
Humidity	Less than 80% RH
Power Consumption	DC12V : DC12V(±10%), Max.150mA(IR LED ON : MAX. 400mA)
Dimension(mm)	Φ100x106
Weight	350g

* Design and specifications are subject to change without notice.